

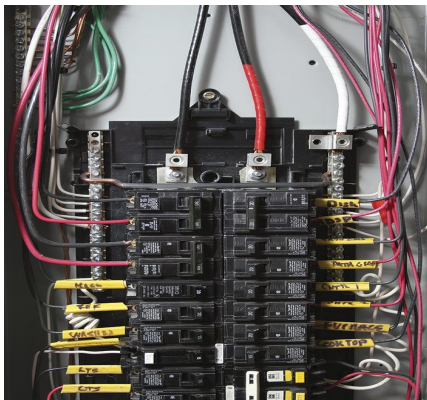
Bullseye Bulletin

Bullseye Home Inspections, LLC
Oklahoma City, OK
(405) 314-3106



April 13, 2026

Common Electrical Panel Defects During Inspections



The electrical panel, or breaker box, acts as the heart of a home by distributing electricity safely from the utility to circuits and acting as the main line of defense against overloads. It is crucial for preventing fire hazards by breaking circuits when power demands exceed capacity. Below are some common areas of concern that should be addressed as soon as you occupy the home.

- 1.) **Panel Box Not Labeled Correctly.** Properly labeling an electrical panel is critical for safety, efficiency, and code compliance, allowing for quick, safe power disconnection during emergencies (like fires or shocks) and easy identification of circuits for repairs.
- 2.) **Missing Breaker Knockouts.** Missing knockouts in an electrical panel are significant safety hazards that expose live electrical components, creating risks of electrocution, fire, and pest intrusion. These open holes violate code requirements to maintain a sealed enclosure, allowing easy access for fingers, tools, or debris.
- 3.) **Double Tapped Breaker.** A double-tapped breaker, where two wires are connected to a single circuit breaker designed for one, is a significant fire hazard and a common electrical code violation. It causes loose connections, overheating, and arcing inside the electrical panel, often resulting in flickering lights or tripped circuits.
- 4.) **Loose Wires.** Loose wires in a circuit breaker panel are a severe safety hazard, often causing high-resistance connections that generate intense heat, melting, and electrical fires. They can cause arc faults, damage the breaker or busbar, and prevent the breaker from tripping during an overload.

You can access this Bullseye Bulletin, as well as past Bullseye Bulletins at:
www.bullseyeinspectionsok.com/bullseyebulletin

OK Lic. #70003249